

Vetus EQ

Equine Ultrasound Imaging System

Dedicated & Professional



Q | Search Mindray Animal Medical

www.mindrayanimal.com
service@mindrayanimal.com

P/N:ENG-Vetus EQ-210285X8P-20230203
©2022 Shenzhen Mindray Animal Medical Technology Co., LTD. All rights reserved.



Concise and Practical

Innovative Design

- Intuitive touchscreen
- Sealed touchpad
- Seamless control panel

Sturdy Construction

- Sealed interface resistant for hairs and fluids and ease of disinfection



15.6-inch high-resolution LED, narrow bezel and wide viewing angle

12.3-inch high-sensitivity anti-glare touchscreen

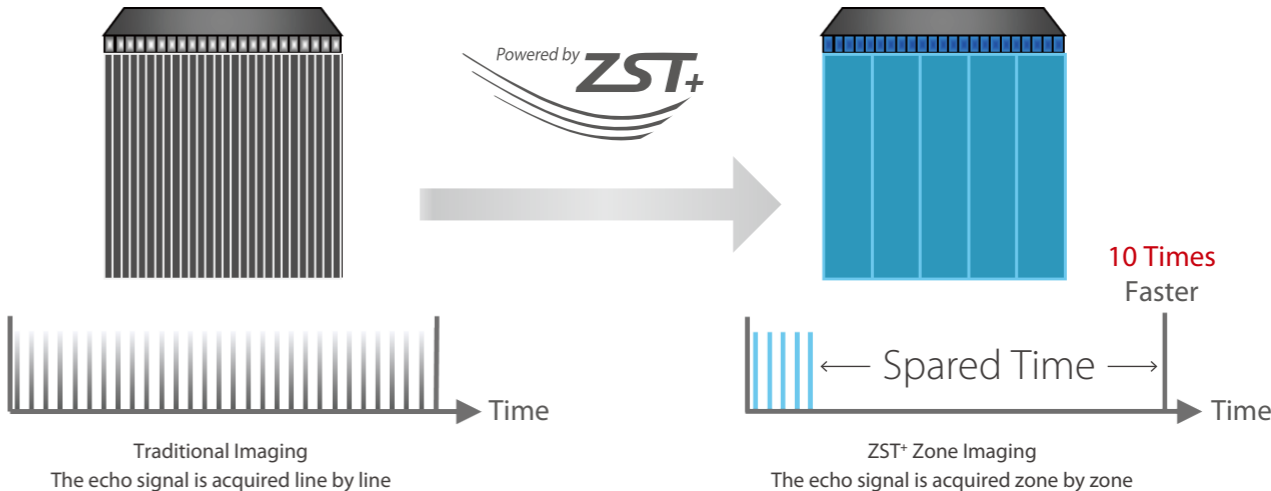


6.6 lbs main unit 1.7-inch thickness

Ultra thin Ultra light

Advanced ZST+ Imaging platform

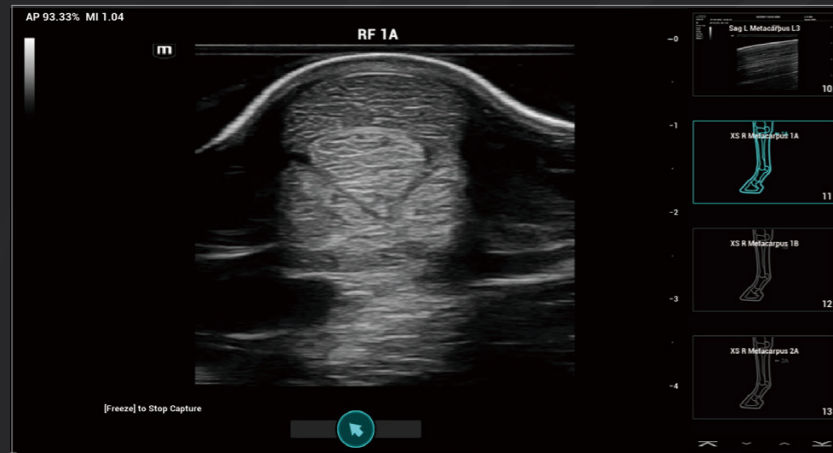
Empowered by Zone Imaging, Zone Focusing, and Zone Processing, the ZST+ platform improves image quality tremendously, enabling equine practitioners to see more detail with fewer keystrokes.



Mindray Animal Medical has been developing innovative and comprehensive ultrasound systems since its inception. For years, we have strived to provide outstanding healthcare for varied species, including companion, exotic, farm, and other animals.

The Vetus EQ Ultrasound is a portable and powerful color Doppler ultrasound system dedicated for equine imaging. Equipped with the revolutionary ZST+ platform, Vetus EQ System provides excellent image quality and professional tools for equine veterinarians.

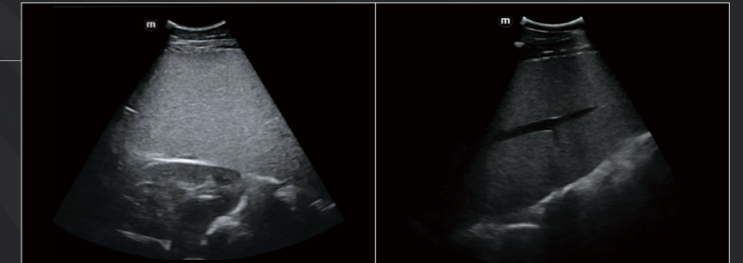
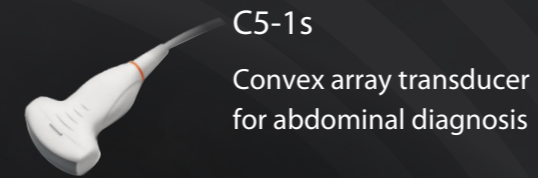
Dedicated Equine Application



iWorks: Dedicated Equine Scanning Protocol

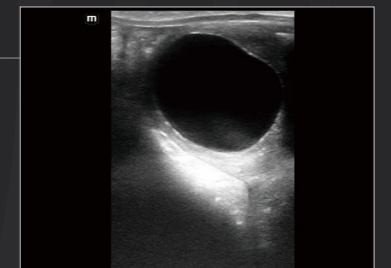
The equine-dedicated protocol can standardize and simplify your scanning process by reducing exam time by up to 50% and removing 80% of keystrokes.

Abdomen Application



Reproduction Application

6LE5Vs
Intra-rectal linear array transducer for reproduction



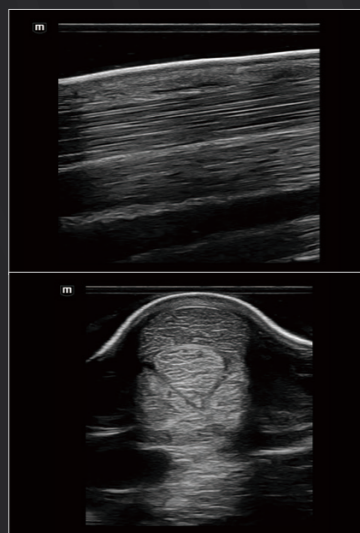
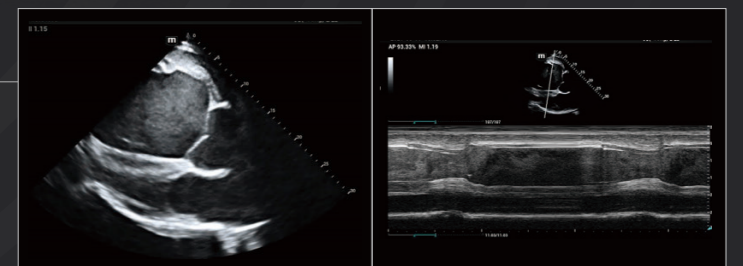
MSK Application

L13-3Ns
Wide frequency range linear transducer for tendon application



Cardiology Application

P4-2s
Phased array transducer with excellent penetration used for cardiology application



Portable and Durable

iCover—Protective Cover set

Protect the system from scratches, wear and tear, and liquids.



U-Bank

Additional battery pack supports up to **8 hours** of working time.



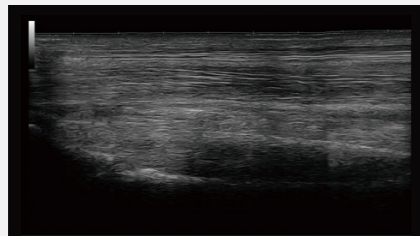
Travel Backpack

A sturdy backpack for working outside or on the go offers a unique design with an inner pocket to hold the ultrasound system, transducers, power supply, and gel bottle.



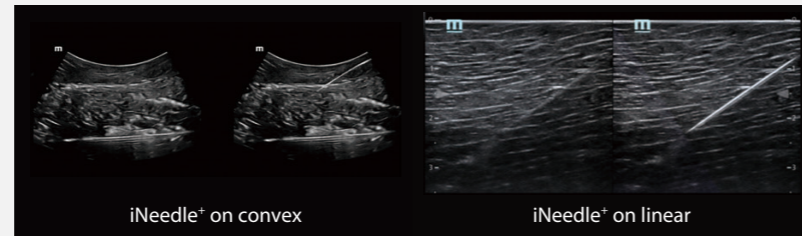
Convenience and Confidence

Tendon Application



iScape

iScape provides a panoramic view of anatomic structures for better viewing and measurements.



iNeedle+ on convex

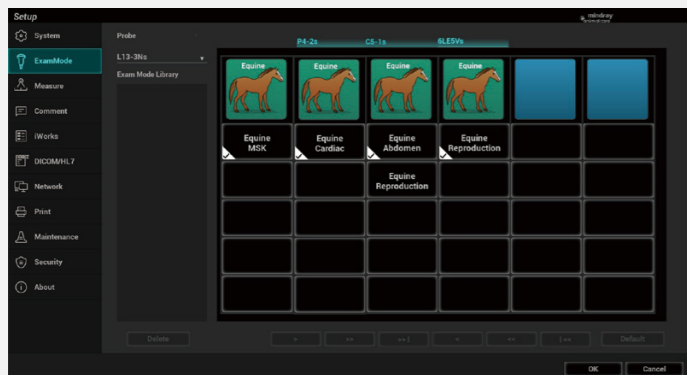
iNeedle+ on linear

***iNeedle+**

This needle visualization enhancement software helps clinicians have increased confidence in identifying the needle tip's position during interventional procedures, such as injection, aspiration, and biopsy.

*optional

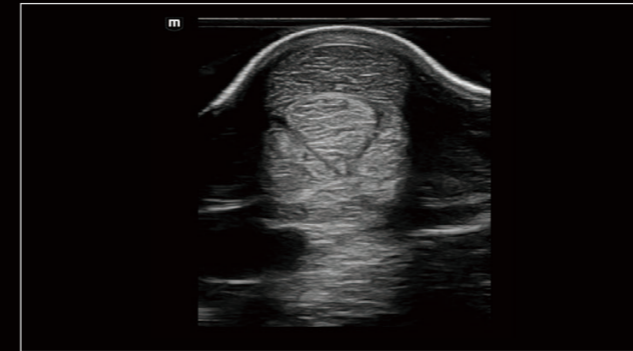
Specific and Professional Preset



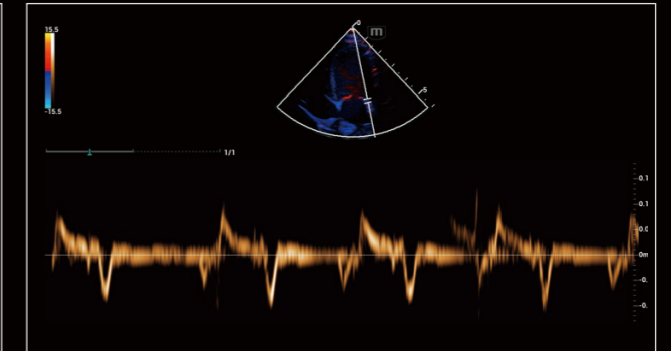
Focused on equine imaging, Vetus EQ Ultrasound has a series of professional presets for different clinical scenarios, including:

- MSK
- Cardiac
- Abdomen
- Reproduction

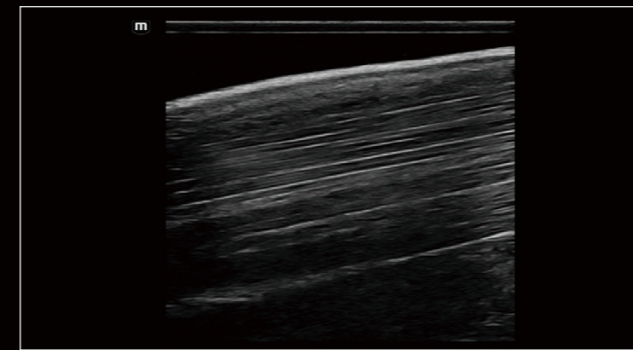
All above increase the efficiency and quality of equine practitioners' work.



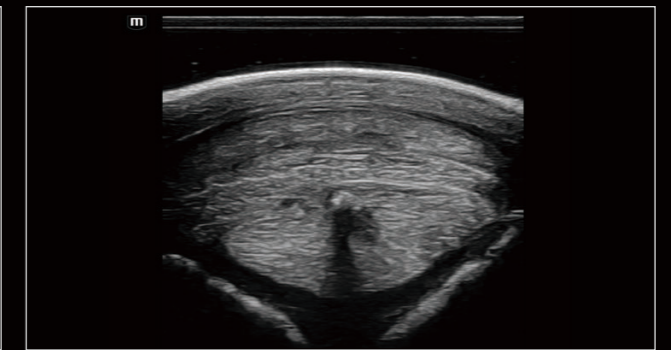
Equine Tendon



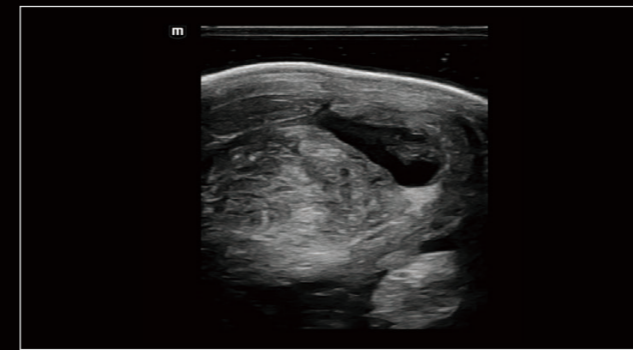
Equine Cardiac TVD



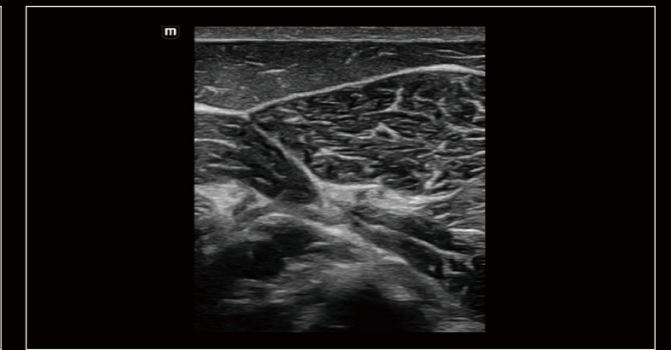
Equine Proximal Metacarpal Region



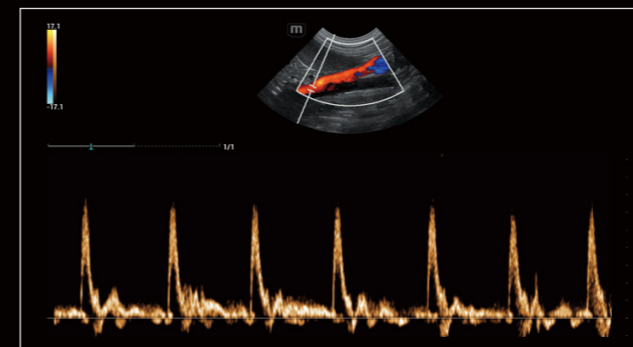
Tendon Calcification



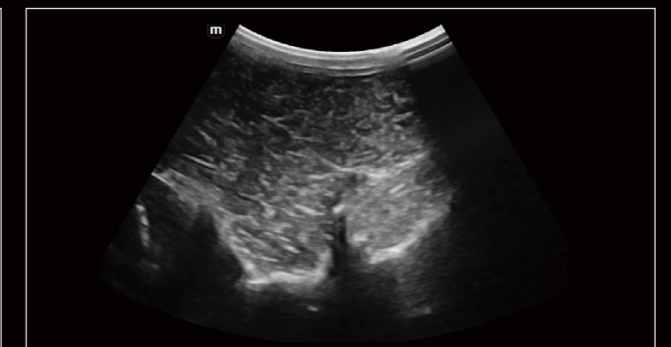
Equine Tendon Effusion



Equine Lumbar Muscle



Equine Abdominal Aorta Flow



Equine Spine