

**mindray**

# M6Vet

Hand-carried Ultrasound System



# Great Performance in a Portable Solution

The M6Vet ultrasound system addresses the changing needs of today's veterinary medicine with an ideal balance of performance, versatility, design, and durability.

Whether you are in the clinic or in the stable, Mindray's M6Vet system will go where and when you need it providing a high level of confidence to get the job done. With unrivaled image quality, the M6Vet system makes image acquisition fast and easy for the unpredictability of animals.

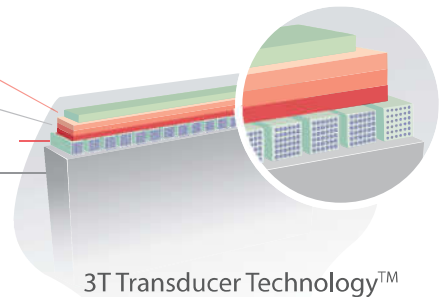
With an all-alloy rugged design, fast boot up, and long battery life, the M6Vet system is a perfect solution in or out of the clinic.

## 3T Transducer Technology™

Mindray's unique transducer technology to increase image bandwidth and transmission efficiency:

- Triple-matching layer design
- Total-cut design
- Thermal-control design

- Lens
- 3 Matching layers
- Composite crystal
- Backing Material



**C11-3s, micro-convex array**

Small animal abdomen, cardiac



**7L4s, linear array**

Large animal tendon, small animal's abdomen, small parts



**P7-3s, phase array**

Small animal cardiac



**6LE5Vs, linear intrarectal**

Large animal intrarectal

## Professional Design for Veterinary Use

- Veterinary information management tool for more than 6 types of animals
- Up to 22 veterinary body markers
- Abdomen, cardiac, OB, vascular, small parts and MSK exam modes plus analysis packages for different types of animals
- Veterinary OB table
- User-defined formulas for more applications



EQUINE



BOVINE



OVINE



CANINE



FELINE



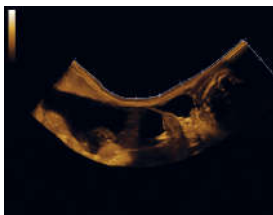
DOLPHIN

# Intelligent Workflow

- iTouch™: Intelligent image optimization for B-mode, Color Doppler and PW mode
- Smart Tracking: Continuously track the color flow and optimize the best color box in real time scanning
- Smart Doppler: Automatically optimize the size and position of color box and Doppler gate placement to ensure optimal signal color and spectral Doppler sampling

# Comprehensive Functionalities

- iScape™: real-time panoramic imaging with velocity indicator, a very useful tool to evaluate horse tendons
- Free Xros™ Imaging: Anatomical M-mode can support ejection fraction (EF) measurements offline and significantly shorten exam times
- Advanced cardiac function assessment packages including Free Xros™ CM Imaging: Anatomical Curved M-mode and Tissue Doppler imaging



Turtle-Bladder-iScape™



Mitral Valve



Canine Spleen Mass



Turtle-Ovary & Spawn

# High-capacity Battery and Data Storage

- 1TB hard drive
- Up to 90 min scanning time with battery
- Lightweight system design (12lbs) with traveling case for outdoor diagnosis
- Raw data enables advanced post-processing when the exam is completed

# Versatile Multi-functional Cart

- External LCD monitor provides more perspective
- Up to 3 transducer connectors
- Height adjustable platform
- External DVD R/W storage
- Compact design enables higher flexibility





**Mindray Global Headquarters**  
Shenzhen, China



**Mindray Innovation Center**  
San Jose, California



**Mindray North America Headquarters**  
Mahwah, New Jersey

**Mindray North America  
Innovation Center**

2100 Gold Street  
San Jose, CA 95002

Tel: 800.288.2121 Support: 877.913.9663 [www.mindray.com](http://www.mindray.com)

©2018 Mindray DS USA, Inc. Subject to change. Mindray® is a registered trademark of Shenzhen Mindray Bio-Medical Electronics Co. Ltd. 08/18 P/N: 0002-08-40365 Rev A

**mindray**  
NORTH AMERICA